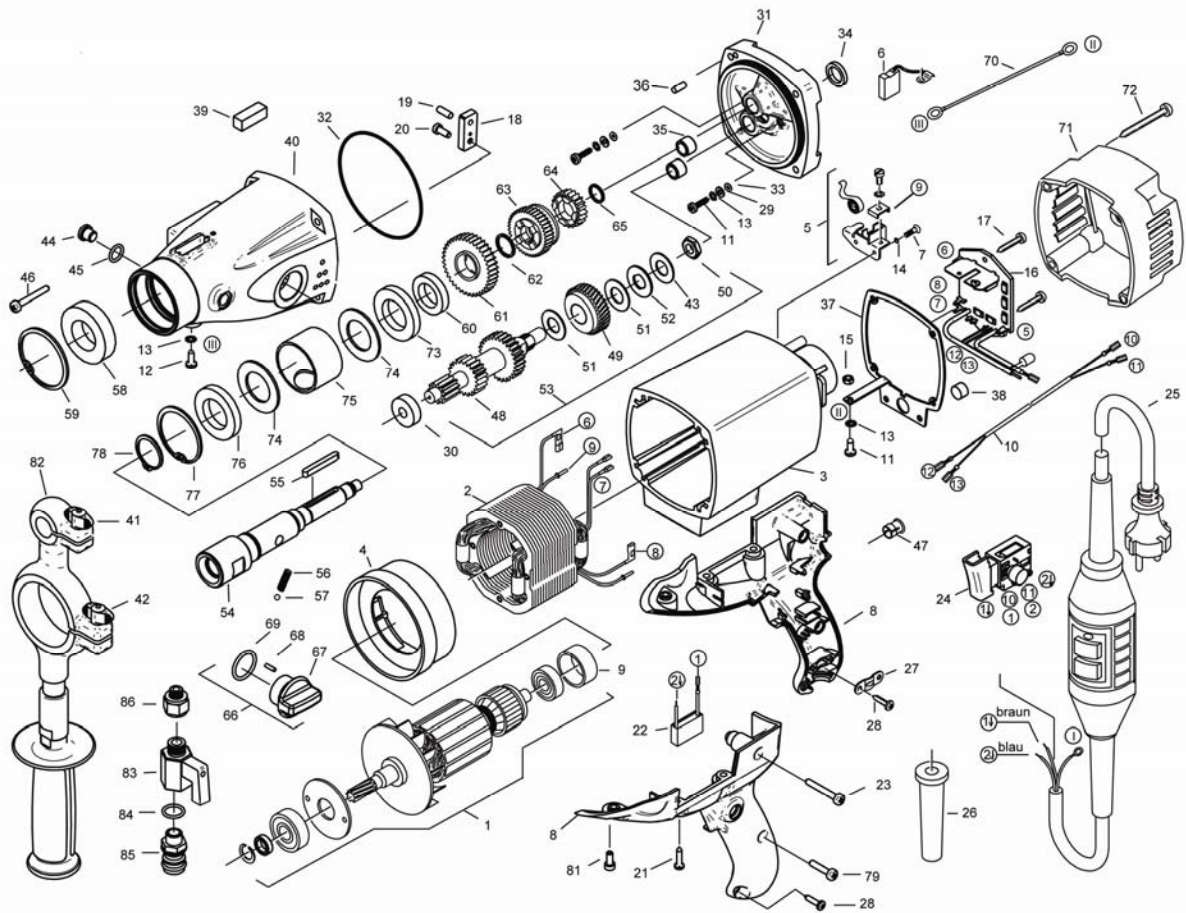




# EXPLODED VIEW





## SPARE PART LIST (part 1)

Mark plan	Spit code	Description	Quantity
1	623500	Rotor compl. 220 V	1
2	623501	Stator compl. 220 V	1
3	623502	Motor housing	1
4	623503	Air guiding ring	1
5	643080	Brush holder compl.	2
6	623504	Brush set (2 pieces)	2
7	623505	Screw CM 4 x 12	4
8	623508	Pair of handle halves	1
9	623204	Bear cover	1
10	623507	Switch cable	1
11	643110	Screw M 4 x 16	3
12	623508	Screw M 4 x 6	1
13	643130	Tooth lock washer A 4,3	4
14	623509	Washer	4
15	623510	Hex screw M 4	1
16	623511	Circuit board compl.	1
17	623512	Self tapping screw HF 3,9 x 9,5	2
18	623209	Grooved ball bearing 6201 RSZ	1
19	623210	Grooved ball bearing 6000 2Z	1
20	623211	Screw M 5 x 12	1
21	623513	Self tapping screw HC 5,5 x 19	4
22	623212	Anti parasit condensor	1
23	623514	Self tapping screw HC 4,8 x 32	1
24	623515	Switch	1
25	623516	Connecting cable compl. 5 m + PRCD	1
26	623214	Cable grommet	1
27	623215	Wire locking flange	1
28	643280	Self tapping screw 4,2 x 13	3
29	643230	Disc A 4,3	2
30	623216	Needle bearing 6,29	1
31	623517	End shield of gearing RAL 2004	1
32	623518	O-ring 94 x 2	1
33	643330	O-ring 3,68 x 1,78	2
34	623219	Bearing cover 15 x 21 x 3	1



## SPARE PART LIST (part 2)

Mark plan	Spit code	Description	Quantity
35	623220	Needle sleeve HK 1010	2
36	623222	Notched pin 5 x 12	2
37	623519	Handle plate	1
38	623520	Spirit level handle	1
39	623224	Spirit level gear box	1
40	623521	Gearbox housing	1
41	623522	Thumpnut M 5 x 20	1
42	623523	Thumpnut M 8 x 25	1
43	623221	Disc spring	1
44	623228	Plug	2
45	623229	O-ring 1/8"	2
46	623524	Self tapping screw 5,5 x 45	4
47	623525	Holder	1
48	623230	Intermediate shaft 1	1
49	623231	Gear	1
50	623232	Nut BM 12 x 1	1
51	623526	Bronze washer	2
52	623527	Washer clutch	1
53	623235	Coupling compl.	1
54	623236	Spindle 1/2"	1
55	623238	Catch	1
56	623246	Pressure spring	1
57	623237	Ball	1
58	623239	Needle bearing 8/28	1
59	623240	Safety ring 52/2	1
60	623247	Shaft seal 22 x 35 x 7	1
61	623248	Free gear 1	1
62	623249	Welled washer	1
63	623250	Gear	1
64	623251	Free gear 2	1
65	623252	Welled washer	1
66	623255	Speed selector compl.	1
67	623528	Speed selector button	1
68	623257	Catch	1



## SPARE PART LIST (part 3)

Mark plan	Spit code	Description	Quantity
69	623258	O-ring 22 x 2,5	1
70	623529	Conductor cable	1
71	623530	Cover	1
72	643210	Self tapping screw HC 4,8 x 45	4
73	623254	Shaft seal 28 x 45 x 7	1
74	623244	Washer	2
75	623531	Distance tube	1
76	623243	Shaft seal 28 x 47 x 7	1
77	623242	Safety ring 47 x 1,75	1
78	623241	Safety ring 28/1,2	1
79	623532	Self tapping screw HC 4,8 x 22	1
80	623533	Screw M 5 x 12	2
81	623534	Front handle	1
82	623535	Water switch	1
83	623259	Seal	1
84	623261	Water connection	1
85	623536	Reduction	1